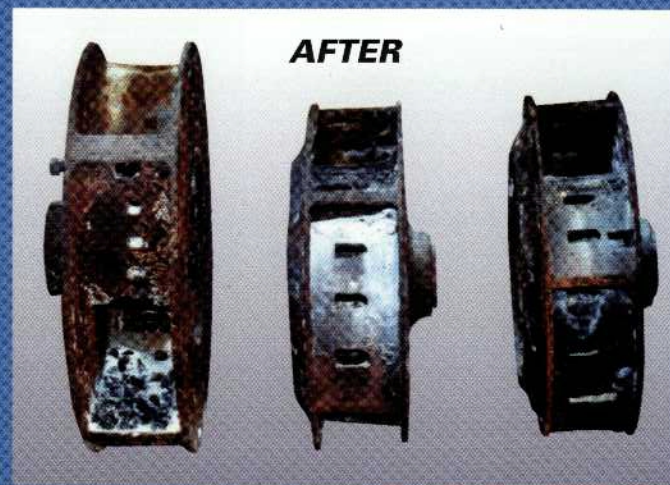
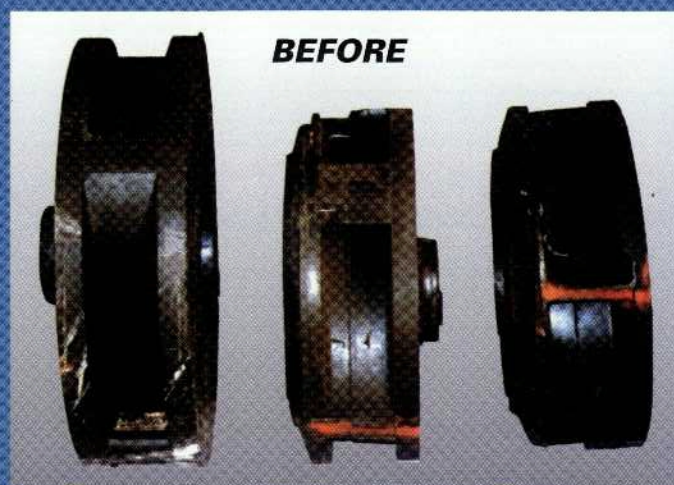


FAST - SAFE - DURABLE

THE PROOF IS IN YOUR PRODUCT



If you're thinking of replacing an existing oven or purchasing a new one, you will want to consider the best designed, quality oven on the market. We offer an unequaled history of performance, safety, reliability and quality construction.

Our best compliments come from the most important people... our clients!

"We did our homework and Steelman Ovens were clearly superior to all others on the market. Both the bake and burn-off ovens work flawlessly" - Manager of an electric equipment remanufacturer".

"We used to have problems with fires and explosions in our burn-off oven. Our new Steelman oven has eliminated those problems." - Paint line supervisor of a large manufacturing facility".

"We used to have the fire marshall and the EPA at our door regularly because of heavy smoke coming from our plant. Not anymore." - President of a rubber-to-steel manufacturing plant".

We would like to hear from you to discuss your oven requirements. Please feel free to contact us for further information including video, specifications, and "How to Select a Burn-off Oven" booklet.

STEELMAN INDUSTRIES, INC.

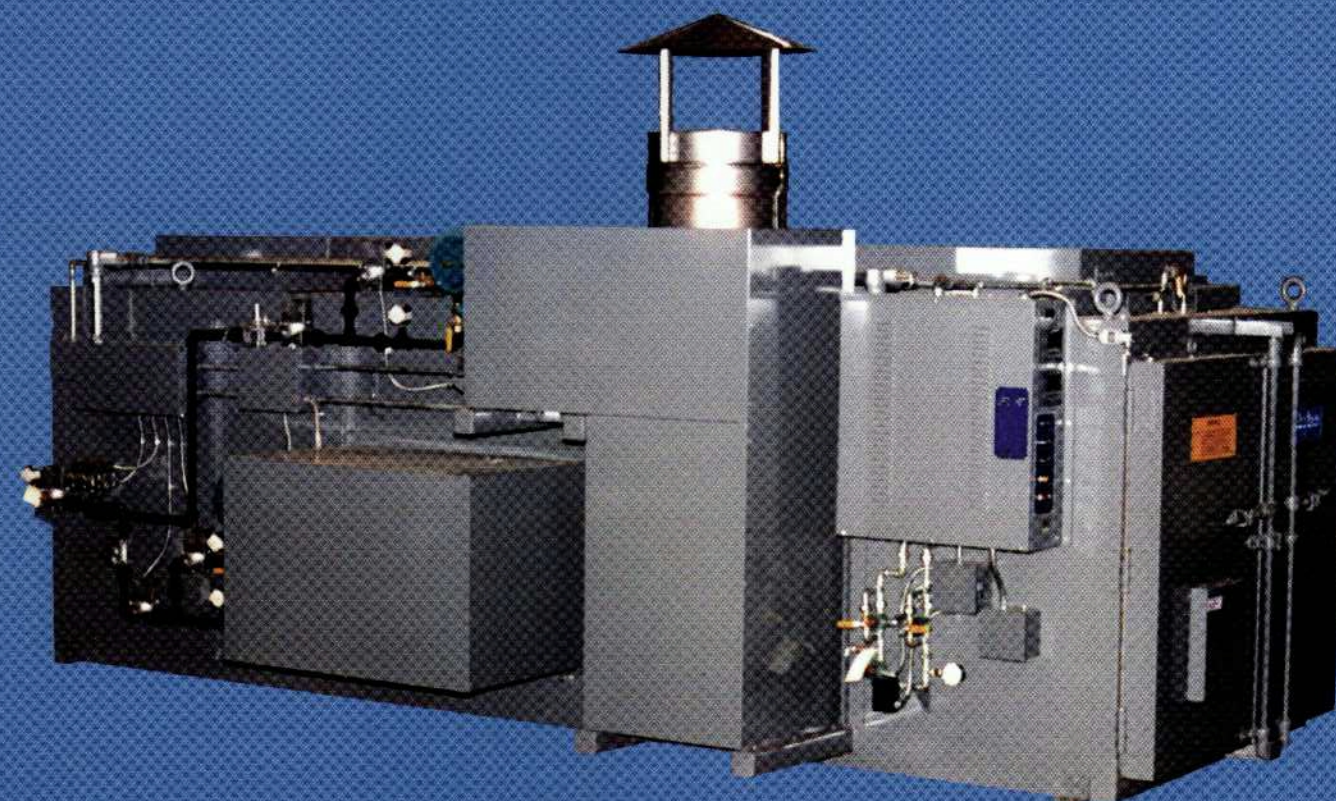
P.O. Box 1461 • 2706 Hwy. 135

Kilgore, Texas 75662

<http://www.steelman.com> • email sales@steelman.com

(903) 984-3061 • Fax (903) 984-1384

STEELMAN
INDUSTRIES, INC.

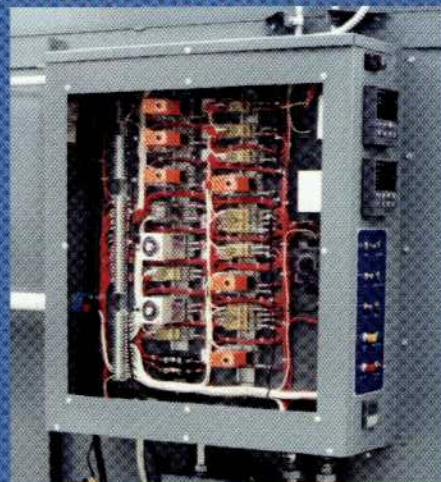


Ask about our Bake Ovens

Plastic & Rubber Burn-Off Ovens

A BURN-OFF OVEN IS MORE THAN JUST A HOT BOX

AUTOMATIC PROCESS CONTROL (APC)



APC makes oven operation totally automatic.

- Eliminates operator error
- Automatic cycle removes guesswork
- Uses high/low burner control
- Incorporates 3 level safety system
- Includes cool-down circuit



RATE OF CHANGE CONTROL

(RCC - Patent 5,189,963)

RCC allows our ovens to process large quantities of material quickly, without a fire hazard.

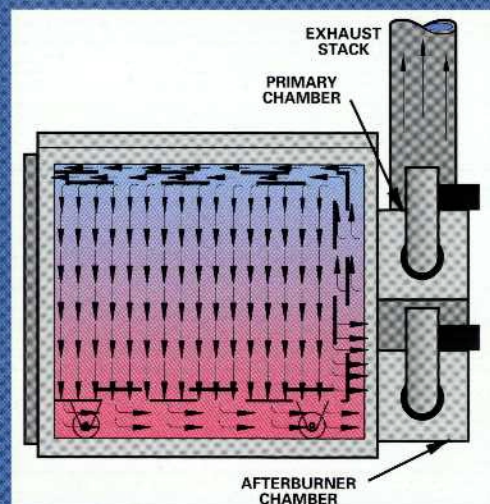
- Not a "Ramp & Soak" control
- No programming or menu selection required
- Monitors oven and afterburner
- Primary and backup water sprays and safety shutoff

TOP/DOWN HEATING

(Patent 5,351,632)

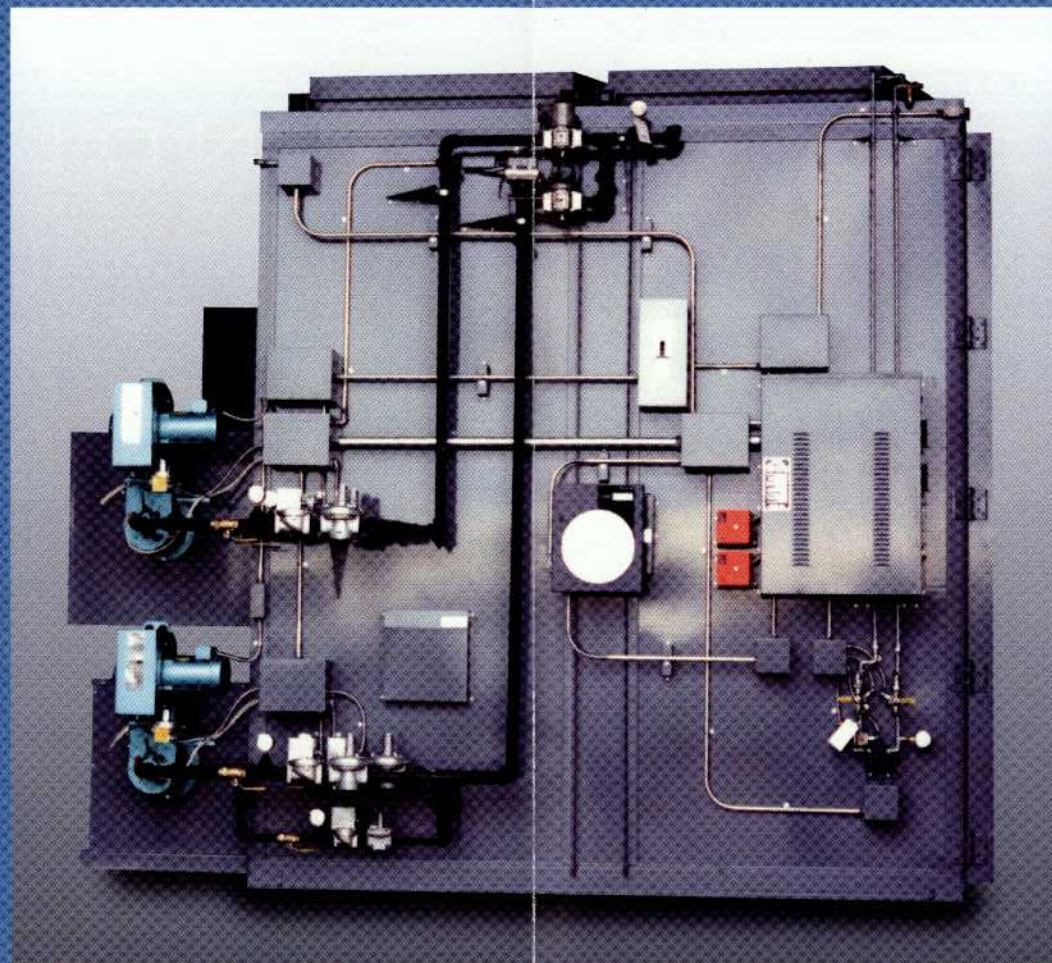
This patented technology is the reverse of our competitors' bottom-fired design, which evolved from incinerator technology. Heating and controlling from the top has many benefits:

- Prevents damage to parts
- Reduces cart & wheel damage
- Improves operating efficiency
- Lowers emissions
- Provides uniform temperatures
- Allows ash pans in carts
- Eliminates combustion chamber damage & regular maintenance



STEELMAN

INDUSTRIES, INC.



HIGH-FIRE AFTERBURNER

The high-fire afterburner heats up rapidly to 1500° F with a 1/2 second residence time. This benefit is included as standard (environmentally preferred).

- Meets current & future air quality standards
- Assures that the afterburner is ready to process vapors at a maximum rate
- Reduces cycle times

LEARN THE DIFFERENCES... CONTACT STEELMAN

INDUSTRIAL QUALITY BURNERS

All Steelman burn-off ovens include heavy-duty industrial quality cast iron burners. Other manufacturers incorporate lighter duty sheet metal packages (some even manufacture their burners in-house).

- Built for industrial high temperature environments
- Available with inputs that exceed one million BTU/Hr
- Designed to produce less emissions

FOLDING CART TRACKS



Steelman oven tracks are built in a hinged assembly which allows the doors to be opened or closed over the tracks. Other manufacturers' designs require the operator to completely remove and replace tracks during loading and unloading procedures.

- Lessens possibility of back injuries
- Requires less work of operators
- Allows quick access to oven

DURABILITY & RELIABILITY

Steelman burn-off ovens are built to significantly higher standards of durability than any other burn-off oven manufactured. Our burn-off ovens are built to alleviate your concerns about corrosion, maintenance, downtime, efficiency and longevity.

- Angle iron & tubing frame
- 4" Refractory & ceramic floor
- Quality, brand name parts
- 5 layer wall protection
- Exceeds NFPA & FM stds.
- Thoroughly tested at factory

YOU CAN AVOID THESE PROBLEMS...

- | | |
|---|--|
| <input type="checkbox"/> Fires and Explosions | <input type="checkbox"/> Incomplete Runs & Poor Results |
| <input type="checkbox"/> Damaged Parts | <input type="checkbox"/> Unwanted and Unlawful Emissions |
| <input type="checkbox"/> Downtime & Maintenance | <input type="checkbox"/> Poor Service & Factory Support |

PURCHASE THE SOLUTIONS BY STEELMAN

- | | |
|--|--|
| <input type="checkbox"/> Patented Rate of Change Control | <input type="checkbox"/> Automatic Process Control |
| <input type="checkbox"/> Patented Top/Down Heating | <input type="checkbox"/> High Fire Afterburner |
| <input type="checkbox"/> Quality Components & Construction | <input type="checkbox"/> Professional Service |